




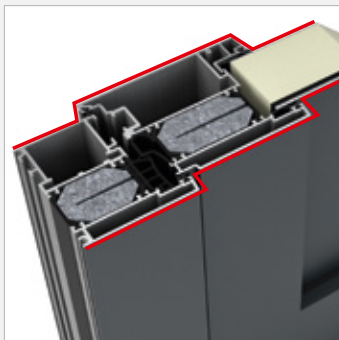


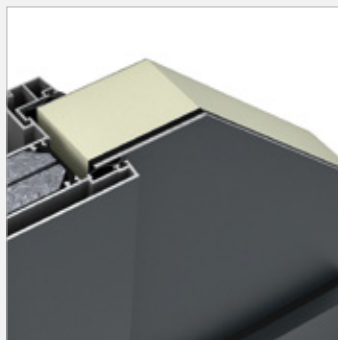
AT 500 ALUMINIUM ENTRANCE DOOR



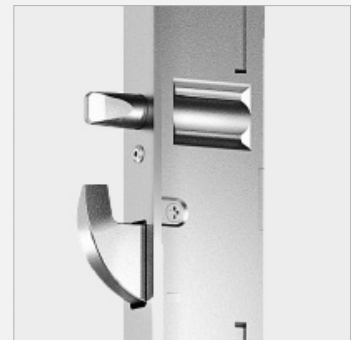
	Thermal insulation	U_D as low as 0.91 W/(m ² K)
	Noise reduction	up to 40 dB
	Security	up to RC3
	Locking	Multi-point locking
	Construction depth	93 mm



Round edge on inside and outside



Cavity-filled structure with expansion insert for thermal stability



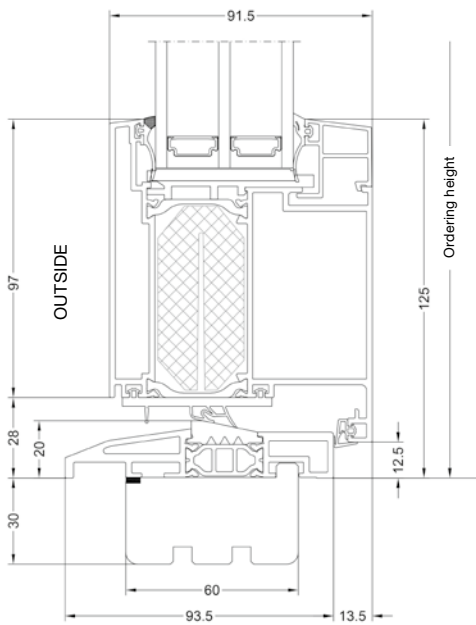
5-lever locking as standard for highest security

ALUMINIUM ENTRANCE DOOR

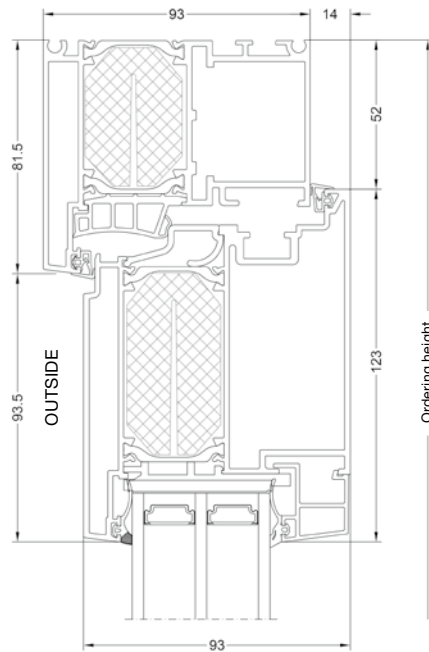
AT 500

Diagram

Section - bottom



Side section - top



SJ

Order No: S0004



AM

Order No: A0007



SL



AJ

Order No: A0006

Further entrance door options can be found in the Door Designer:



Internorm Fenster GmbH

A-4050 Traun
Ganglgutstraße 131
T +43 (7229) 770-0
office@internorm.com

Internorm Windows UK Ltd

Unit D, Colindale Business Park
2-10 Carlisle Road, NW9 0HN, London
Tel.: +44 (0) 208 205 9991
Email: office@internorm.co.uk

3/2022

uk.internorm.com
commercial.internorm.com